



SIGNATURE HOUSE NURSING HOME

TOGETHER WE CARE





Welcome to Signature House

Signature House, a part of Amica Care, a not-for-profit charitable organisation, offers high-quality nursing and dementia care in a warm and welcoming environment.

Led by our very experienced Home Manager, our specialist nursing and care teams work together to ensure that our residents lead a better quality of life by receiving outstanding levels of care, stimulation and social interaction that improves both their health and overall wellbeing.



Why Choose Signature House

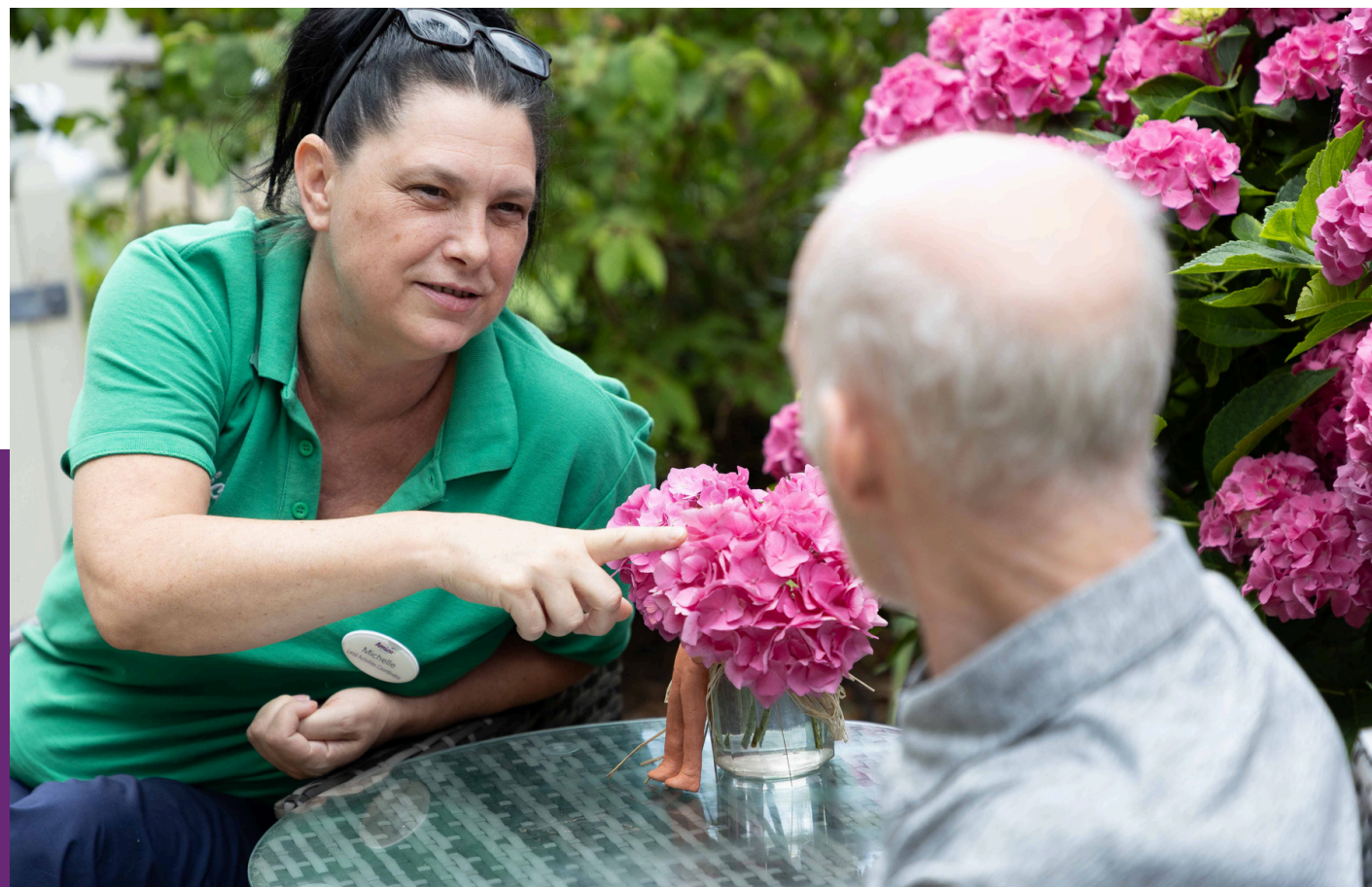
Signature House in Dorchester is a purpose-built care home with nursing. We are located in the Brewery Square complex of Dorchester. The surrounding area has many shops, restaurants, a cinema and a community spirit with many events and activities to choose from.

Signature House is a beautiful home furnished to a very high standard in comfortable, luxurious and spacious surroundings. The home extends over three floors with a separate lounge on each floor, where our residents can relax, meet friends and family, enjoy a chat with our other residents or simply watch a favourite television programme. In our three separate dining rooms, we have restaurant-style dining offering nutritious home-cooked food prepared by our trained chefs who are happy to cater for individual tastes.

At Signature House we have a clear understanding of the importance of preparing residents' favourite foods to encourage healthy appetites. This helps to ensure our residents eat and drink enough to ensure a healthy diet in a social and convivial atmosphere.

Our fully equipped onsite hairdressing salon is popular for holistic one to ones such as pampering hand massages and nail treatments as well as elegant hairdos and hair trims, all of which can help to nurture the spirit of our residents. All of our bedrooms have en-suite wet rooms, ensuring privacy and convenience for our residents and their visitors. With motion sensors for added safety, meaning that your loved one will be in a safe environment at all times. Our large enclosed gardens are landscaped and very private and safe for our residents to enjoy. Attractive to birdlife, we have raised beds and a sensory garden to ensure that our residents are stimulated both outside the home as well as inside.

Care and the Types We Provide



Residential Care

Amica Care provide compassionate, dignified care in a home-from-home environment. At the heart of our service is a genuine commitment to enhancing the lives of our residents and creating a homely environment in which they feel safe and cared for.

Nursing Care

Our homes offer residents a warm and nurturing environment with the additional support of high-quality nursing care. At the centre of our care is a commitment to kindness, respect and compassion. Your loved one will be given the support they need with an emphasis on making them as happy and comfortable as possible.

Dementia Care

Our homes for individuals with dementia offer a secure and nurturing home-from-home environment. We prioritise creating comfortable spaces where your loved ones can thrive, promoting their independence to the fullest. All of our homes have access to a safe outside space that residents can use independently.

End of Life Care

Our end of life care is focused on respecting and carrying out the personal wishes of each resident. We work closely with families and specialist healthcare professionals to ensure that comfort, choice and dignity are at the forefront of all care decisions.

Respite Care

Caring for an elderly or disabled family member can be extremely rewarding – yet at times, both physically and emotionally challenging. Our respite care service is ideal for those needing a short break either to recharge their batteries or to make necessary adaptations at home.

Day Care

If a brief change of scenery is required then our friendly day care service is a great solution for both you and your loved one. As a carer, daily errands may be easier to complete with a day of respite as well as any necessary adaptations to the home which cannot be done while your relative is with you.

Person Centred Care

Whatever type of care is needed, the level of service will be exceptional and tailored to personal requirements. Some of our residents require help from day to day, while others appreciate extra assistance or even specialist 24-hour nursing care.

Hence, everything we do is specific to the individual needs of each person. We ensure that we know as much as possible about our residents' lives including hobbies and interests, what they like as well as what they don't. Along with their medical history and personal requirements, this valuable information makes up their own personalised and detailed care plan. This means that every member of our team comes to know the person as an individual, and we can then plan their care, exactly to their needs. Naturally, we also constantly review and revisit every care plan to make sure we make it right every time. This means that you can be assured that your loved one is receiving the highest quality of care when they need it.





Activities and Lifestyle Support

Keeping busy stimulates the brains of people living in a care home whilst boosting a sense of usefulness and accomplishment. For this reason, we develop stimulating activities both inside and outside the home. Some of these take the form of away days and trips into the community, allowing residents to savour some of Dorchester's delights.

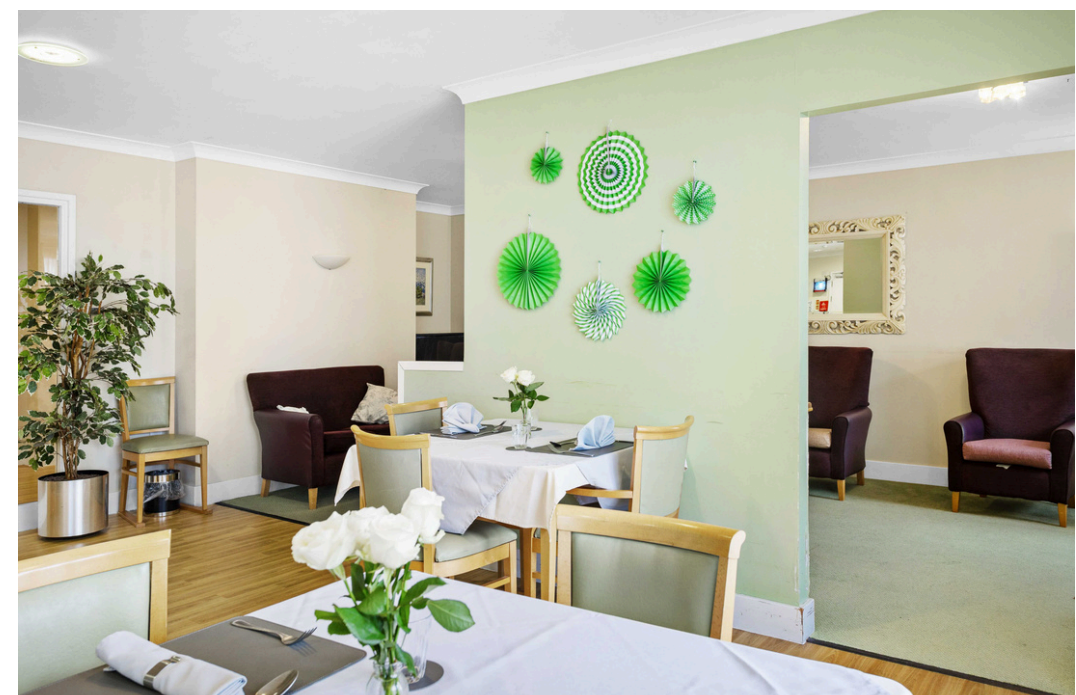
We have strong links with the local community and Signature House is very well known in the area, helping to create, and retain a real spirit of community. We delight in art and crafts, music therapy games and exercise to improve mobility, social interaction and mental stimulation. We have found that exercise is key to staying strong which in turn helps to prevent falls, whilst having fun. It is, of course, all down to individual preferences and some of our residents prefer smaller activities on a one to one basis with our dedicated Activities team and Carers.

Elegant Dining

Our chefs use fresh, seasonal ingredients sourced from local producers to create nutritious, tasty dishes for our residents to enjoy.

Residents can choose from a delicious and varied gourmet menu to enjoy in our bright and airy dining spaces. Residents are encouraged to eat the meals they love, and to experience new taste sensations from our creative kitchen team. On our menus, you'll find a mixture of traditional favourites, seasonal specials and international cuisines. Every week you'll find different options that have been introduced by the experts in our catering team, or specially requested by residents.

We also create a bespoke nutritional profile and meal planning for each resident, as part of the care package. If you're a relative who would like to keep track of your loved one's meals, you would be welcome to have access to our electronic care plans, which are updated in real-time.





MANDY BUGLER
Home Manager

The Home Manager and Team

At the heart of it all is our quality team of nurses and carers that make the difference. Recruitment and training are key to creating a successful team.

We recruit, employ and retain the best and irrespective of their time in care, they all complete our mandatory training programme based on best practice techniques. This gives our team confidence to improve which in turn gives confidence to our residents, and their families, that they are being cared for by the best.

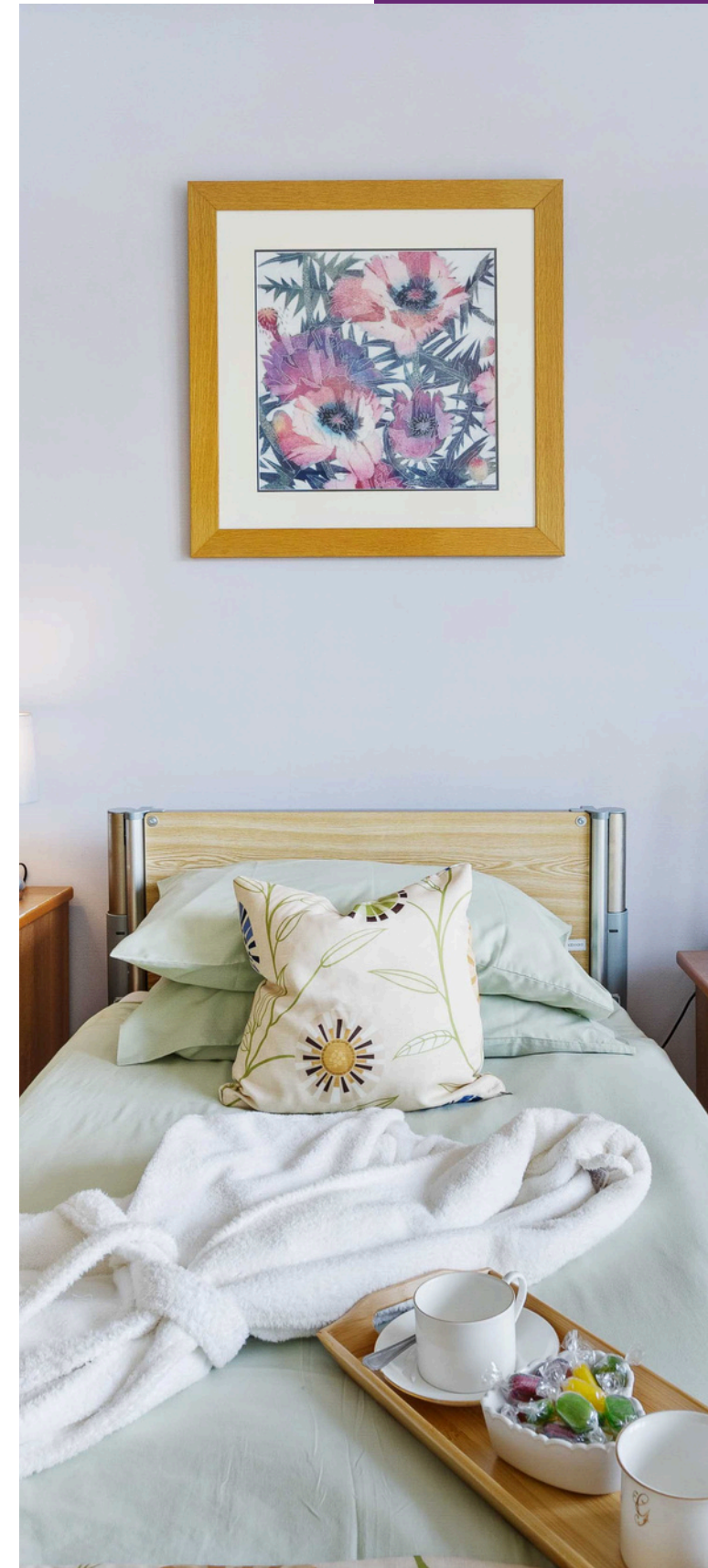
Mandy Bugler is the Home Manager who is a Registered Nurse with more than 30 years' experience. In June 2020 Mandy was given the title of Queen's Nurse by the Community Nursing Charity, The Queen's Nursing Institute (QNI) which indicates a commitment to high standards of patient care, learning and leadership. Mandy leads a team of dedicated Nurses and Carers to ensure residents living in Signature House receive person-centred care in a way which is empowering, respectful, dignified and compassionate.

Guidance and Support Throughout

From choosing care that is right for you and your loved one, right through to moving into a care home, our expert team is there to help and support you. We fully understand that moving a loved one into care is a huge decision to make, which is why we are here to help you with any concerns you may be feeling at this time, enabling you to concentrate on making the right decision for everyone involved. If you are unable to visit the home, our team will offer a virtual tour, take photos of the home and take them along when they visit to carry out an assessment of care needs prior to move-in day.

Our Maintenance Team will help you to personalise the room with treasured possessions ensuring that your loved one feels comfortable in familiar surroundings.


We value our relationship with our resident's families and provide support every step of the way, including monthly Newsletters and regular family meetings. This brings families together for support and to share experiences, which gives reassurance for all, just when you need it.




Get in Touch


Contact us for more information or to arrange a visit:

Signature House Nursing Home

 2 Maumbury Square
Dorchester
DT1 1GR

 01305 257248

 signature@amicacare.co.uk

 www.amicacare.co.uk

 facebook.com/signaturehousedorchester

